



Centre for Analytical  
Research in Development

PROFILE



# ABOUT US

Centre for Analytical Research in Development Limited (CARD Ltd) is a premier monitoring and evaluation consulting firm in the Global South based in Nairobi, Kenya. The firm offers reliable monitoring and evaluation services for Civil Society Organizations, Non-Governmental Organizations, and Faith-Based Organizations across the globe. CARD Ltd was established over a decade ago with the sole mission of **"supporting organizations in measuring progress and tracking impact"** in all sectors of international development. It is founded on the idea that organizations in the Global South should use context-specific and culturally acceptable monitoring and evaluation tools to steer evidence-based development, rather than relying on generic, traditional, and top-down approaches.

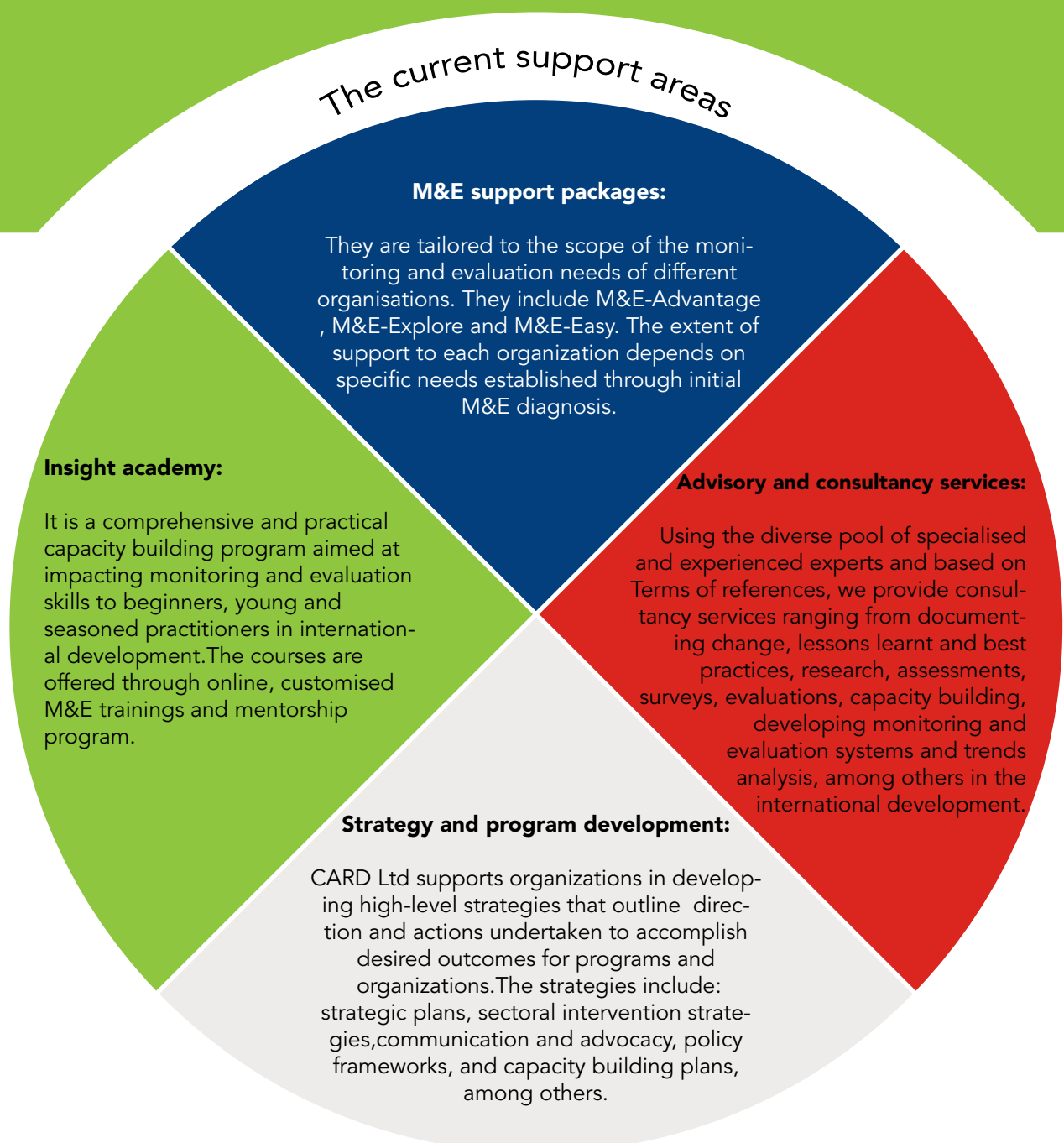
CARD Ltd envisions a future where, **" Every organization has a reliable and rigorous monitoring and evaluation system that keeps everyone informed and happy with social impact of their investments"**. It is managed by a lean executive team and a pool of qualified and experienced associate experts in monitoring and evaluation, practical research, development approaches, community development, humanitarian aid, conflict prevention, peace and reconciliation, governance, preventing violent extremism, youth and women engagement, strengthening civil society organizations, community security, and climate change, among others.



# CURRENT FOCUS AREAS

**Implementing alternatives practical research projects:** Through participatory monitoring approaches, we implement ground-breaking and practical action research initiatives aimed at addressing fundamental social challenges in economic livelihoods, climate change, health, peace and conflict, youth and women, vulnerable groups interventions and governance among other sectors in international development.

**Comprehensive monitoring and evaluation services:** At CARD Ltd, we collaborate with different stakeholders including donors, corporations, and organizations to develop organizational and programme strategies, create and implement monitoring and evaluation (M&E) systems, tools, and innovations that produce reliable evidence to prove effectiveness of their projects.



# Monitoring and Evaluation Resource Centre

We have put together sufficient reading materials for anyone interested in research and extensive reading on monitoring and evaluation. Most of them can be accessed freely from the website while a few are paid at an affordable fee.

## Past Experiences

Some of the organizations CARD Ltd has worked for in the past are:

**International Organizations:** Fryshuset (Swedish Organization), Albany Associates (United Kingdom), Women in Informal Employment: Globalizing and Organizing (WIEGO), Care Germany, Climate Action Networks, Water Mission International (WMI), International Alert (IA), Equal Access International (EAI), Peace Brigades International (PBI) and The African Women's Development and Communication Network (FEMNET).

**Local Organizations:** Anglican Development Services (ADS) – Western, Eastern, Pwani and Central Rift regions – Kenya, Catholic Justice and Peace Commission (CJPC), Reformed Church of East Africa (RCEA) and Kenya Wildlife Conservancies Association (KWCA).

## Contact us:

📍 102 468 – 00101, Nairobi, Kenya

📞 +254 721 910 367 | +254 732 910 367

✉️ tnyagah@cardke.org

🌐 <https://www.cardke.org>

🐦 @cardke    📷 johnthomas\_dr    🌐 Thomas Nyagah

📘 Centre for Analytical Research in Development